

# Fastener Selection Guide

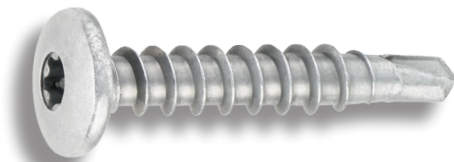
## AUSTENITIC STAINLESS STEEL (300 SERIES) IS REQUIRED FOR MAXIMUM BUILDING PERFORMANCE.

MEG Inc recommends utilizing 300 series stainless steel fasteners in the attachment of MEG's exterior grade phenolic rainscreen panels. Among the commercially available stainless steel fasteners are these from SFS intec. MEG panels, fastened with SFS intec 304 series stainless steel fasteners, will withstand the test of time and meet the stringent design requirements of today's modern facilities.

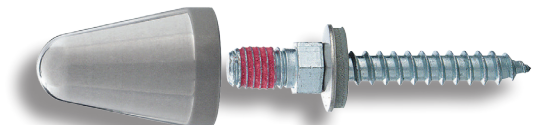
### SFS intec Fastener Types and Applications

**SX3 TORX®** A pan head bi-metal fastener made of austenitic stainless steel (304) with a carbon steel point. This fastener self-drills for the attachment of metal to metal utilized as an exposed color-matched fastener for the attachment of MEG rainscreen panels.

**GAZ Design Elements** A two-part fastening system to create special emphasis on internal or external surfaces. The 304SS anchor secures MEG rainscreen panels to steel or aluminum sub-frames. The design element cap is then effortlessly assembled onto the special fastener after installation. GAZ Design Elements are secure against unwinding through dynamic loads and cannot be removed manually after curing.



SX3 TORX®



GAZ Design Element

Description	Part No.	Global Code
<b>SX3-D10 TORX®</b>		
#10-16 x 1" SD T20W	1193547	SX3/11-D10-4,8x25
<b>SX3-D12 TORX®</b>		
#12-11 x 1-3/16 SD T25	1271253	SX3/15-D12-5,5x30
<b>GAZ #14 Anchors</b>		
14 x 1-1/4 Type A Stainless Steel	6132	GA-AS-S16-6,5x32
14 x 1-3/4 Type A Stainless Steel	921058	GA-AS-S16-6,5x45
14 x 1-1/4 Type B Stainless Steel	920499	GA-BS-S16-6,3x32

Description	Part No.	Global Code
<b>GAZ Design Elements</b>		
Stainless Steel Cap	974222	GAZ-801-S
Stainless Steel Cap	984140	GAZ-804-S
Stainless Steel Cap	920496	GAZ-806-S
Stainless Steel Cap	920497	GAZ-807-S
Stainless Steel Cap	974609	GAZ-811-S
Anodized Aluminum Cap		
Styles: 801, 804, 806, 807 and 811		
Colors: red, blue, green, black, gold and silver		



MATERIAL EXTERIOR GRADE

MEG Inc  
60 West Sheffield Avenue  
Englewood, NJ 07631  
T: (855) 770-7330  
www.megwallpanels.com



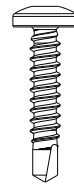
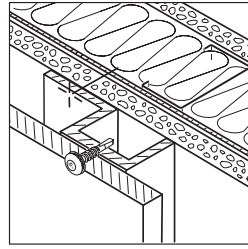
# Application

## SX 3-D10 TORX® Self-Drill

### Metal to metal

Drill capacity: .039 – .118"

Thickness is based on normal, single thickness purlin/girt or multiple material thickness combined for total.



Drive	TORX® T20W
Head Dia	.404-.384"
Thread Major Dia	.189-.183"
Thread Minor Dia	.141-.135"
<b>Strength (ult.):</b>	
Tensile:	1960 lbs
Shear:	1456 lbs
<b>Pull-out (ult.):</b>	
12 ga (.105):	1189 lbs
14 ga (.075):	854 lbs
16 ga (.060):	696 lbs

### Installation

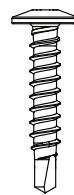
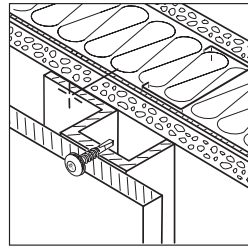
Fasteners should provide for minimum of 3 fully developed threads through the metal substrate.  
Tools: 0-2000 rpm screw gun equipped with depth sensing nose piece. T20W drive bit.

## SX 3-D12 TORX® Self-Drill

### Metal to metal

Drill capacity: .060 – .118"

Thickness is based on normal, single thickness purlin/girt or multiple material thickness combined for total.



Drive	TORX® T25
Head Dia	.404-.384"
Thread Major Dia	.224-.216"
Thread Minor Dia	.163-.155"
<b>Strength (ult.):</b>	
Tensile:	1900 lbs
Torsional:	80 lb-in
Shear:	1620 lbs
<b>Pull-out (ult.):</b>	
12 ga (.105):	1715 lbs
14 ga (.075):	1032 lbs
16 ga (.060):	696 lbs

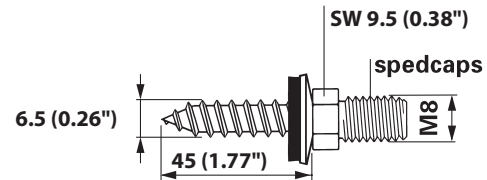
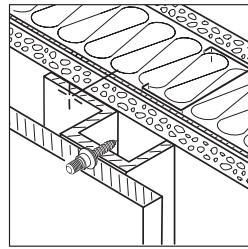
### Installation

Fasteners should provide for minimum of 3 fully developed threads through the metal substrate.  
Tools: 0-2000 rpm screw gun equipped with depth sensing nose piece. T25 drive bit.

## GA #14 Type A Anchor

Fastener: 304SS

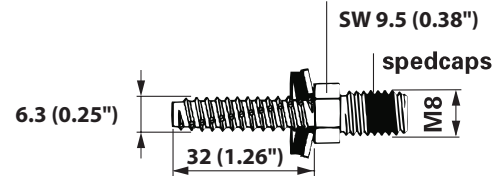
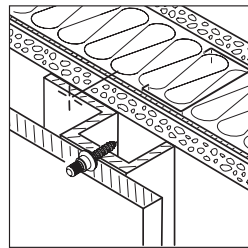
Sealing Washer: SS with vulcanized EPDM



## GA #14 Type B Anchor

Fastener: 304SS

Sealing Washer: SS with vulcanized EPDM



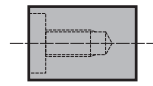
## GAZ Design Element Caps

Available in 316 Stainless Steel, 303 Stainless Steel or anodized aluminum

Available in the following colors:

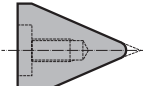
Stainless Steel: Mill finish, 40 maximum surface roughness

Aluminum: red, blue, green, black, gold, silver



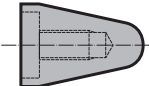
801

0.865" x 1.26"



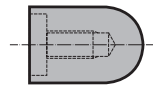
806

1.24" x 1.50"



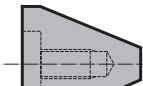
811

0.865" x 1.26"



804

0.865" x 1.26"



807

1.24" x 1.26"

### Notes

Dimensions are nominal unless noted. The specific job conditions should be considered and appropriate safety factors applied when specifying the proper fasteners.



MATERIAL EXTERIOR GRADE

MEG Inc  
60 West Sheffield Avenue  
Englewood, NJ 07631  
T: (855) 770-7330  
www.megwallpanels.com



June 2014